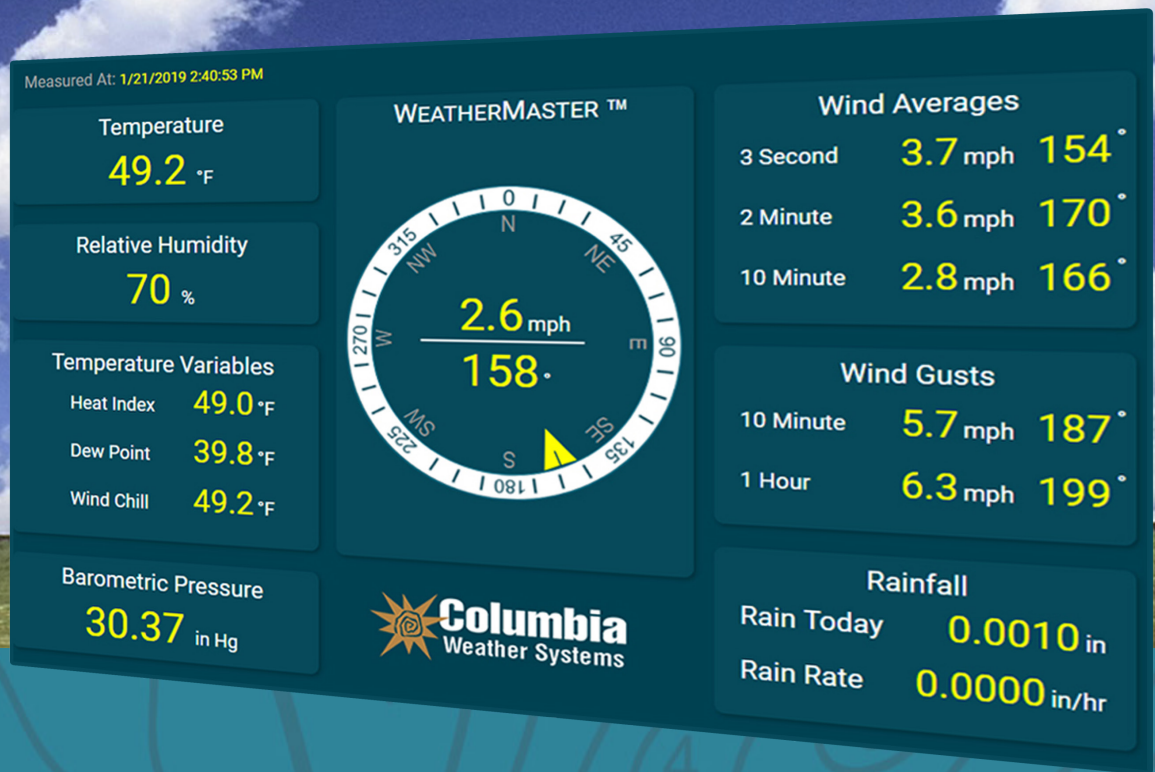


WeatherMasterTM

PROFESSIONAL WEATHER MONITORING SOFTWARE

Alarms | CAMEO | ALOHA Interface | Relay Control | Multi-Station | FTP





Professional Weather Monitoring

WeatherMaster Software is designed specifically to optimize the capabilities of weather stations manufactured by Columbia Weather Systems.

Providing real-time computer weather monitoring, WeatherMaster offers automatic logging of all measured parameters and automatic export of weather data to a web site. The software is capable of monitoring multiple weather stations simultaneously.

- Automatically logs all measured parameters every minute to a database
- HTML-based display screens with available customization
- Interfaces automatically with CAMEO/ALOHA software for toxic plume modeling and evacuation corridor forecasting
- Quick-North function for wind sensor north orientation
- Automatic interface with Weather Underground

"I would recommend the WeatherMaster program to anyone."

~ Maintenance Supervisor WPCP, City of Painesville, Ohio

Compatible with all weather stations from Columbia Weather Systems including:

- Magellan MX™
- Orion™ Weather Stations
- Capricorn FLX™
- Pegasus FLX™ Portable Weather Stations
- Pulsar™ Weather Stations require MicroServer

Data screens offer

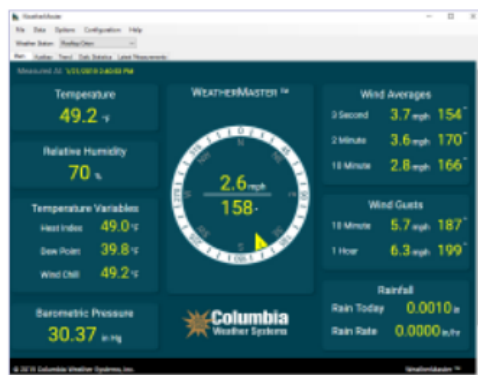
- Graphing and trend display
- Statistics including max/min and daily/monthly averages

Dialog boxes enable

- Programmable alarm notification for severe weather alerts
- Alarm-based relay control to activate equipment such as pumps, fans or lights
- Automated data export in text or HTML
- Automated reporting via email or text message

Possible Weather Station Interfaces and Connections

CWS Weather Station	Serial COM Port	>
Weather MicroServer	XML LAN	>
Internet Weather Station	XML Internet	>
XML File Weather Station	XML Local File	>

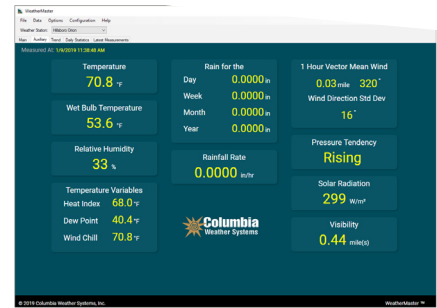
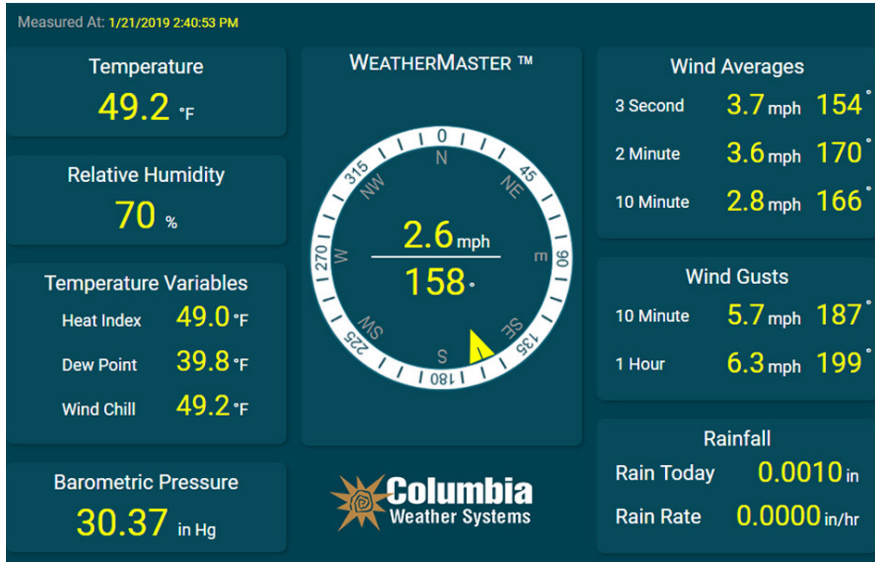


FTP	>	HTML and Text Weather Data
Email	>	Weather Report, Alarms
USB	>	Relay Alarm Notification
Local File	>	XML, HTML, Text Weather Data

Available Outputs and Communication Features

WeatherMaster Monitoring Screen

Displays sensor values and calculated readings in real-time. For a nominal fee, Columbia Weather can edit or customize screens for specific requirements and customer branding.



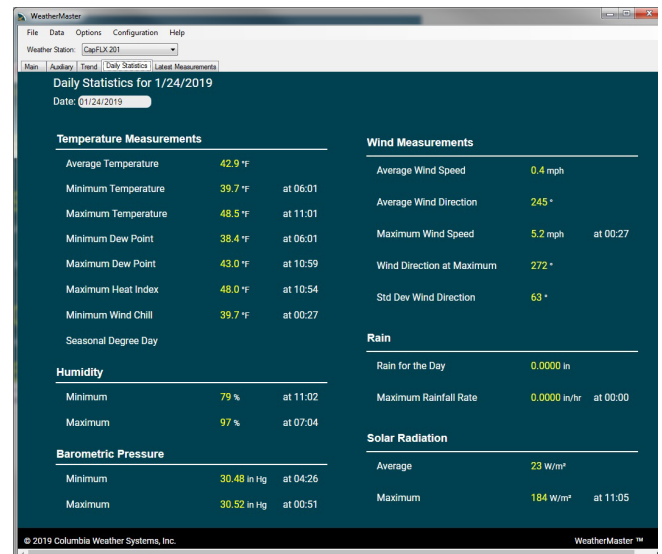
Auxiliary Screen

Shows calculated temperature variables, historic rainfall, vector mean wind speed, direction standard deviation, pressure tendency, and optional sensors such as solar radiation and visibility.



Graph/Trend Screen

Displays a 24-hour trend graph for all standard measured and calculated weather parameters. Trend graphs may be plotted for any date stored within the historical archive database and can either be printed or exported to other documents.



Daily Statistics Screen

Displays daily data for user-selected date. Reports minimum, average and maximum values for key parameters.

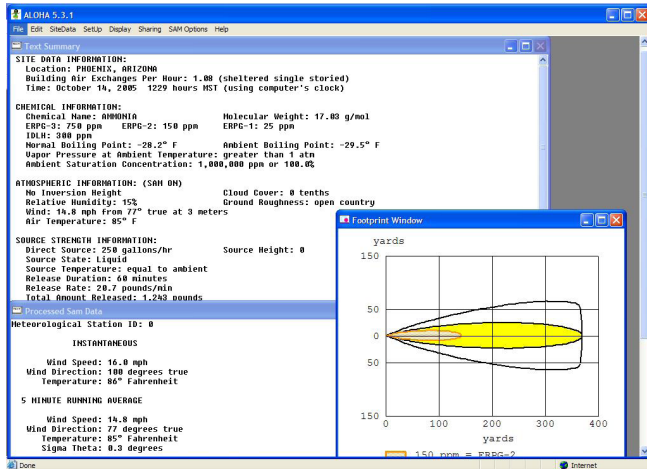
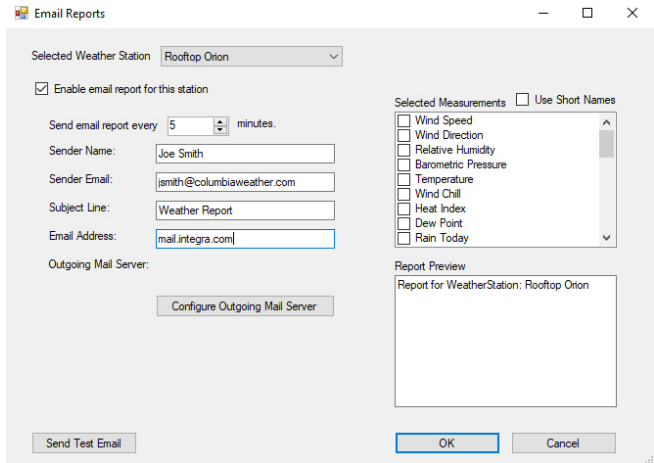
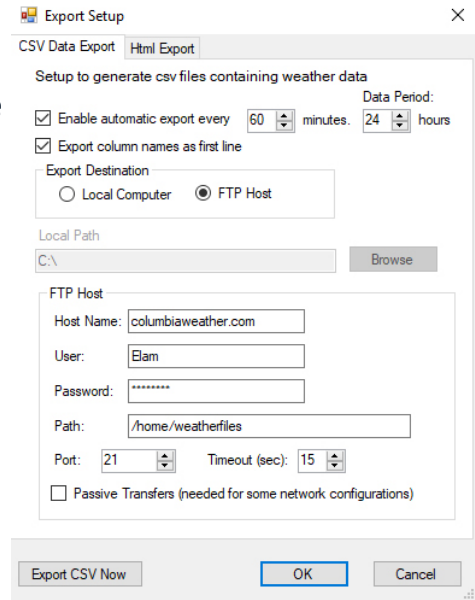
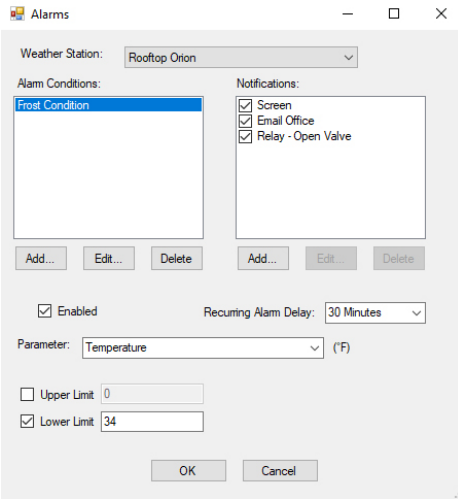
Additional Features

Export Dialog

Export weather readings to your LAN or website in either text or HTML format at user-defined intervals. Readings are available for mission-critical operations or for information sharing.

Alarm Notification

Alerts when hazardous weather conditions threaten operators. Set alarms at user-defined thresholds on any or all standard measured and calculated parameters. Choose the type of notification from audible, email, or relay control.



Email Report

Email weather data to a computer or cell phone at user-defined intervals. The user can select the desired parameters.

CAMEO/ALOHA Interface

WeatherMaster has a built-in interface to ALOHA software to automatically input live weather readings for toxic plume modeling.

Ordering Information

8290 WeatherMaster Software with three
Computer Licenses
8296 Additional Computer License



5285 NE Elam Young Pkwy, Suite C100, Hillsboro, OR 97124 | phone 503-629-0887
info@columbiaweather.com | fax 503-629-0898 | ColumbiaWeather.com
©2020 Columbia Weather Systems. Specifications subject to change without notice.