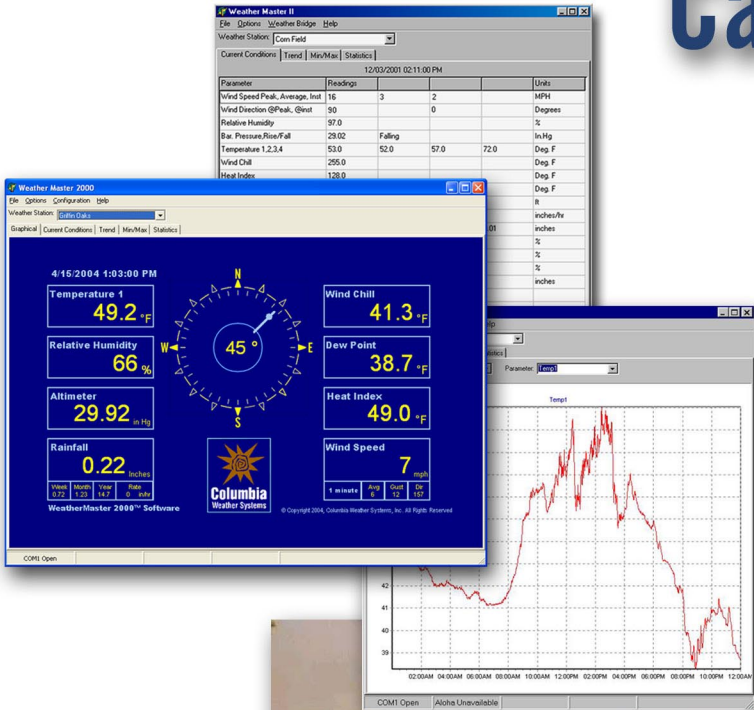
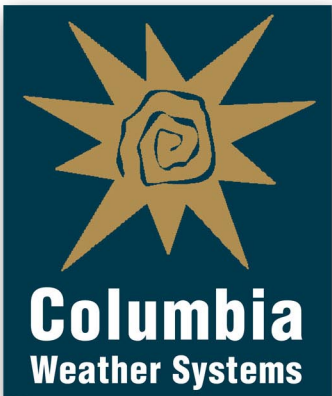


# Capricorn 2000EX™

## Vehicle Mount Weather Station



**For Fire  
Hazmat &  
Emergency  
Operations**



[www.columbiaweather.com](http://www.columbiaweather.com)  
1-888-508-7375



## Capricorn 2000EX™ Vehicle-Mount Weather Station

### Sensor Specifications

**Temperature:** Digital semiconductor type

Accuracy:  $\pm 0.9^{\circ}\text{F}$  from  $+14^{\circ}$  to  $185^{\circ}\text{F}$

$\pm 3.6^{\circ}\text{F}$  from  $-67^{\circ}$  to  $257^{\circ}\text{F}$

Resolution:  $0.01^{\circ}\text{F}$

**Barometric Pressure:** Silicon shear stress strain gauge; temperature compensated and calibrated

Accuracy:  $\pm 0.03$  in. Hg over range

Range: 27.00 to 33.96 in. Hg

Resolution: 0.01 in. Hg

**Wind Speed:** Sealed reed switch

Accuracy:  $\pm 0.25$  mph from 0 to 23 mph,  $\pm 1\%$  from 24 to 160 mph

Range: 0 to 160 mph (139 knots)

Resolution: 1 mph

Starting Threshold: 0.9 mph

**Wind Direction:** Precision Potentiometer

Resolution: 2 degrees

Range: 0 to 360 degrees

Accuracy:  $\pm 4$  degrees

**Relative Humidity:** Capacitance

Accuracy:  $\pm 3\%$  (or better) from 10 to 90% RH

Temperature Effect: less than  $<\pm 1.5\%$  RH

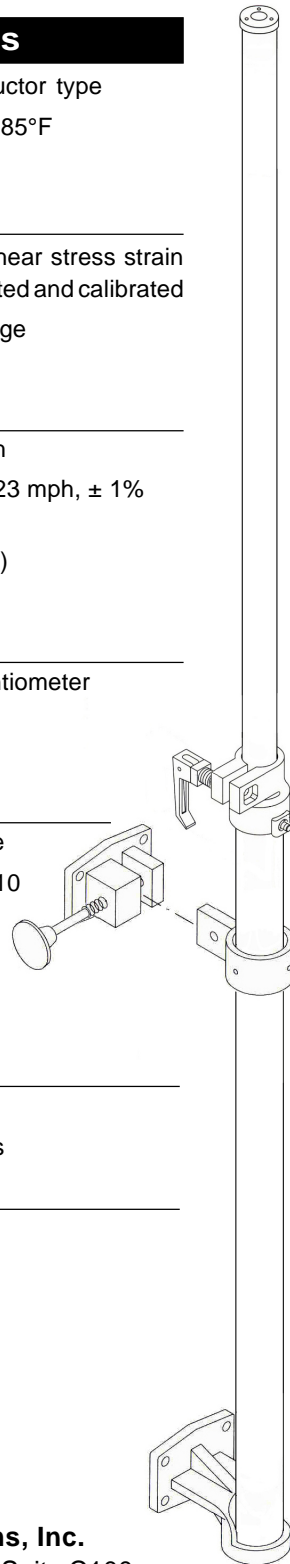
Stability:  $\pm 2\%$  RH over 2 years

Reporting Resolution: 1% RH

**Rainfall:** Tipping bucket

Accuracy:  $\pm 1\%$  at 2 in./hr or less

Resolution: 0.01 inch



**C**apricorn 2000EX Vehicle-Mount™ Weather Stations are specifically designed for Emergency Management Personnel to quickly and easily attach the mast and sensors to any Incident Response Vehicle.

This **8-ft telescoping sensor mast** is made of rugged anodized aluminum, with heavy-duty powdered-coated steel mounting brackets which are permanently installed on the vehicle. The telescoping mast and affixed sensors are detachable for easy storage when not in use.

The built-in **North Orientation Offset** feature quickly and efficiently orients wind direction readings to North.

**WeatherMaster™** software interfaces with **Cameo/Aloha** software to automatically ingest weather data for HazMat applications.

With the Vehicle-Mount option and the **19" rack mount Weather Display console**, the Capricorn becomes the ideal weather station for mobile vehicle operations.

### Weather Parameters Monitored

- Temperature (up to four sensors)
- Barometric pressure, standard sensor
- Wind direction
- Wind speed with gust and average wind
- Relative humidity
- Heat index
- Wind chill
- Daily max/min
- Rainfall (optional)

### Standard System Includes:

- Control module/data logger, wall mount power supply, and internal **barometric pressure** sensor
- One **temperature** probe with 50 ft. of cable
- **Relative Humidity** probe with 50 ft. of cable
- Self-Aspirating radiation shield for temperature and humidity sensors
- **Wind speed and direction** sensor with waterproof cable connector, mounting hardware (includes alignment adapter) and 50 ft. of cable
- **Telescoping Pole** (8 foot) and **Mounting Brackets**
- RS-232 computer cable, 6 feet



**Columbia Weather Systems, Inc.**  
5285 NE Elam Young Pkwy, Suite C100  
Hillsboro, OR 97124  
Toll-free 1 888 508-7375  
Phone (503) 629-0887  
Fax (503) 629-0898  
info@columbiaweather.com  
www.columbiaweather.com